

Algoma UNIVERSITY

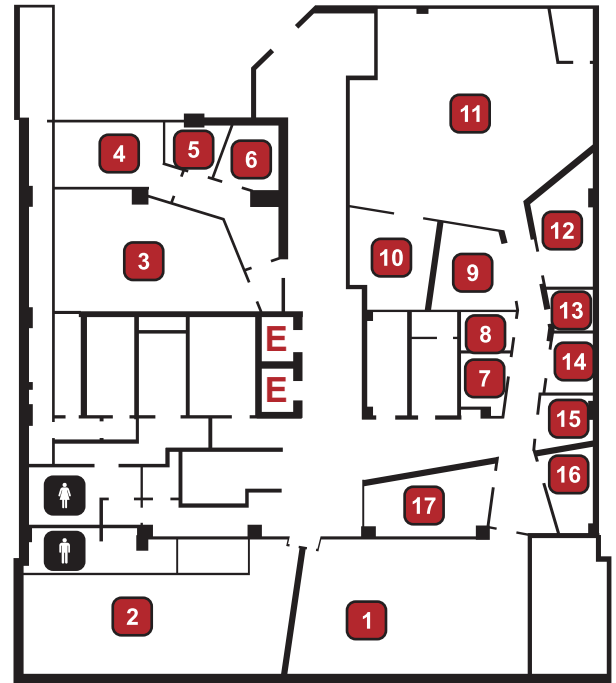
BRAMPTON CAMPUS MAP



FLOOR LL

- | | | | |
|----------------------------|----------|-----------------------------|-----------|
| A-LL1 Classroom | 1 | A-LL10 Student Meeting Room | 10 |
| A-LL2 Classroom | 2 | A-LL11 Student Lounge | 11 |
| A-LL3 Classroom | 3 | A-LL12 Quiet Study Room | 12 |
| A-LL4 Boardroom | 4 | A-LL13 Pantry* | 13 |
| A-LL5 Office | 5 | A-LL14 Office | 14 |
| A-LL6 Office | 6 | A-LL15 Workstation | 15 |
| A-LL7 Office | 7 | A-LL16 Office | 16 |
| A-LL8 Printer Room* | 8 | A-LL17 Sessional Office | 17 |
| A-LL9 Student Meeting Room | 9 | Men's Washroom | |
| | | Women's Washroom | |

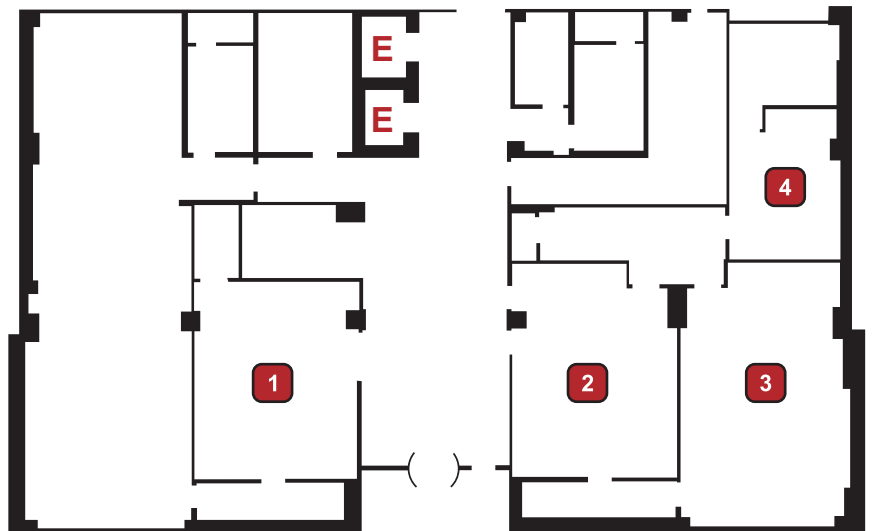
* Staff Access Only



Elevator **E** Printer

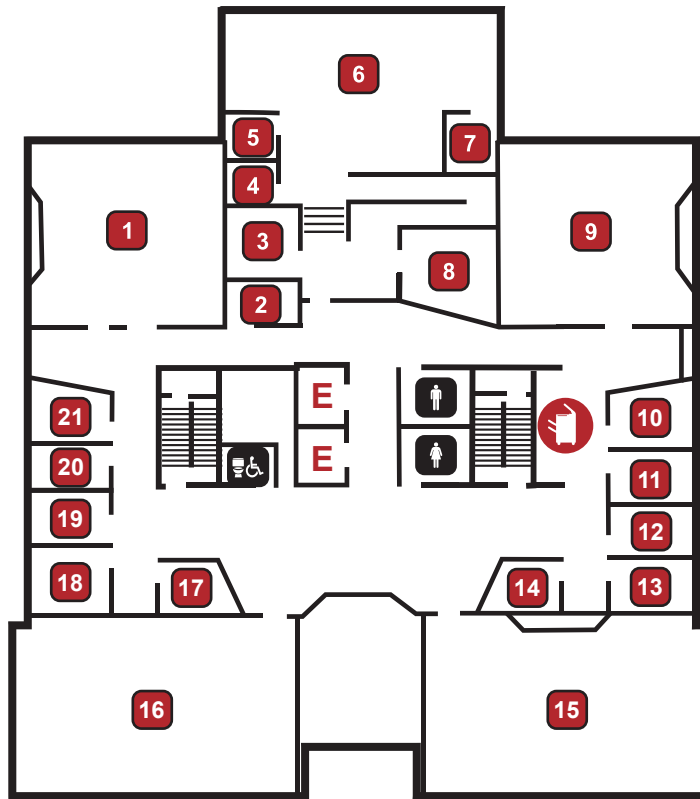
FLOOR L

- | | |
|----------------------|----------|
| A-101 Welcome Centre | 1 |
| A-102 Classroom | 2 |
| A-103 Classroom | 3 |
| A-104 IT Office | 4 |



FLOOR 2

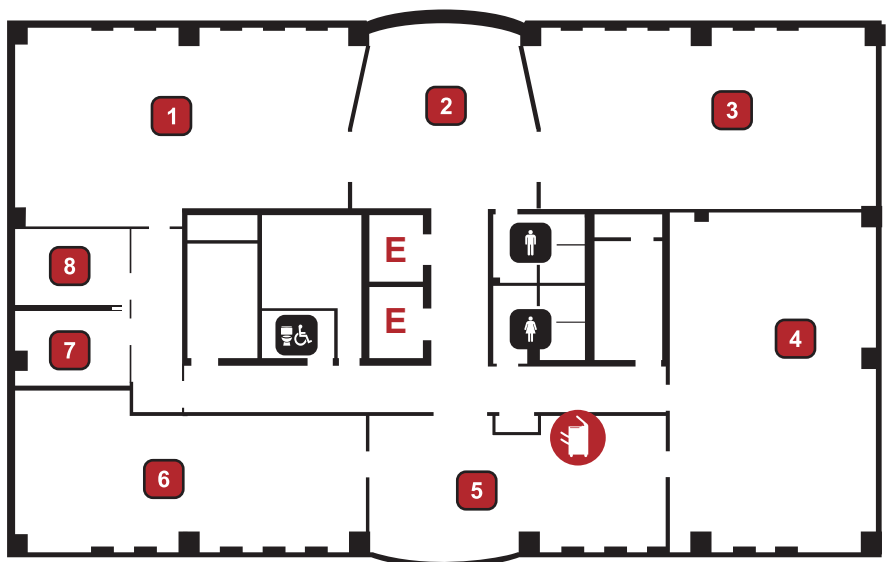
- | | | | |
|------------------------|-----------|--------------------|-----------|
| A-201 Classroom | 1 | A-213 Office | 13 |
| A-202 Office | 2 | A-214 Office | 14 |
| A-203 Office | 3 | A-215 Classroom | 15 |
| A-204 Focus Room | 4 | A-216 Classroom | 16 |
| A-205 Focus Room | 5 | A-217 Office | 17 |
| A-206 Open Workstation | 6 | A-218 Meeting Room | 18 |
| A-207 Office | 7 | A-219 Office | 19 |
| A-208 Pantry | 8 | A-220 Office | 20 |
| A-209 Classroom | 9 | A-221 Office | 21 |
| A-210 Office | 10 | Men's Washroom | |
| A-211 Office | 11 | Women's Washroom | |
| A-212 Office | 12 | All Use Washroom | |



Elevator **E** Printer

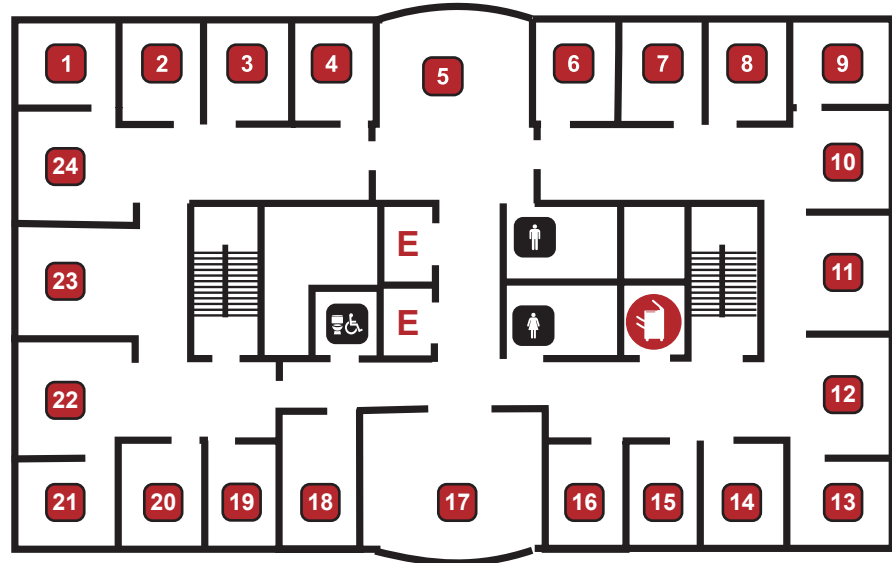
FLOOR 3

- | | | | | | |
|----------------------|----------|----------------------|----------|------------------|--|
| A-301 Computer Lab | 1 | A-305 Student Lounge | 5 | Men's Washroom | |
| A-302 Student Lounge | 2 | A-306 Classroom | 6 | Women's Washroom | |
| A-303 Classroom | 3 | A-307 Office A | 7 | All Use Washroom | |
| A-304 Computer Lab | 4 | A-308 Office B | 8 | | |



FLOOR 5

- A-501 Office 1
- A-502 Office 2
- A-503 Office 3
- A-504 Office 4
- A-505 IT Help desk 5
- A-506 Office 6
- A-507 Office 7
- A-508 Office 8
- A-509 Office 9
- A-510 Open Workstations 10
- A-511 Lunchroom 11
- A-512 Open Workstations 12
- A-513 Office 13
- A-514 Office 14
- A-515 Office 15

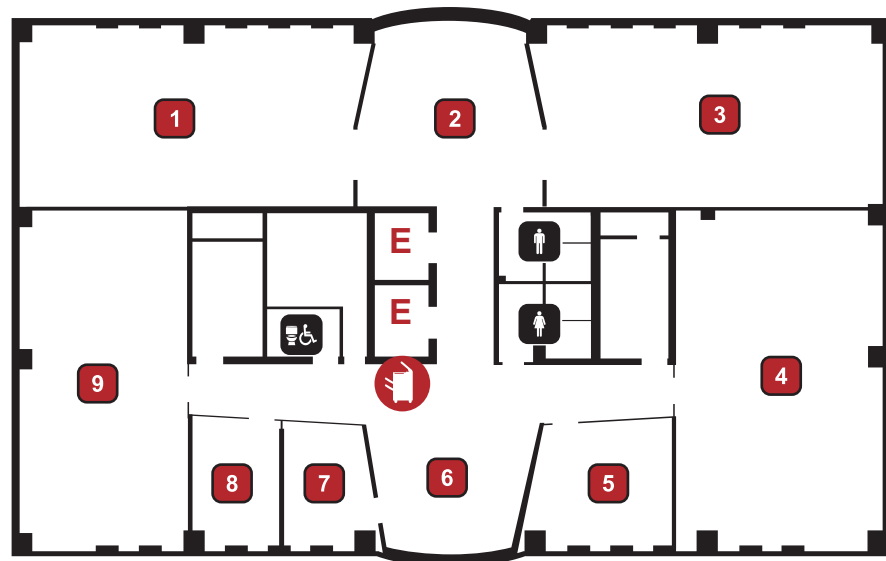


- A-516 Office 16
- A-517 Meeting Room 17
- A-518 Meeting Room 18
- A-519 Office 19
- A-520 Office 20
- A-521 Office 21
- A-522 Open Workstations 22
- A-523 Open Workstations 23
- A-524 Open Workstations 24
- Men's Washroom ♂
- Women's Washroom ♀
- All Use Washroom ♿

Elevator E Printer

FLOOR 6








- A-601 Classroom 1
- A-602 Student Lounge 2
- A-603 Classroom 3
- A-604 Classroom 4

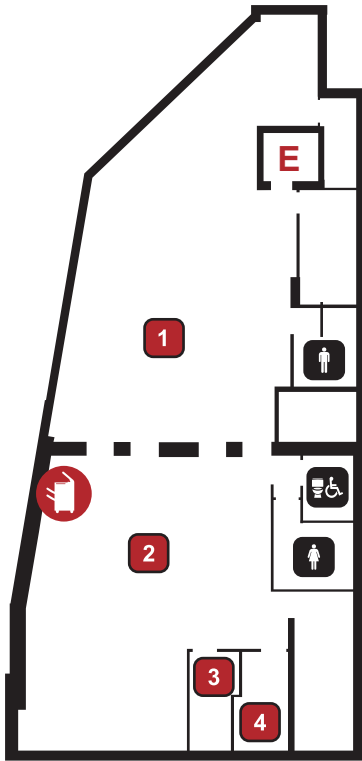



- A-605 Student Meeting Room 5
- A-606 Student Lounge 6
- A-607 Student Meeting Room 7
- A-608 Student Meeting Room 8
- A-609 Classroom 9
- Men's Washroom ♂
- Women's Washroom ♀
- All Use Washroom ♿

BUILDING B - 8 Queen Street East








FLOOR 2

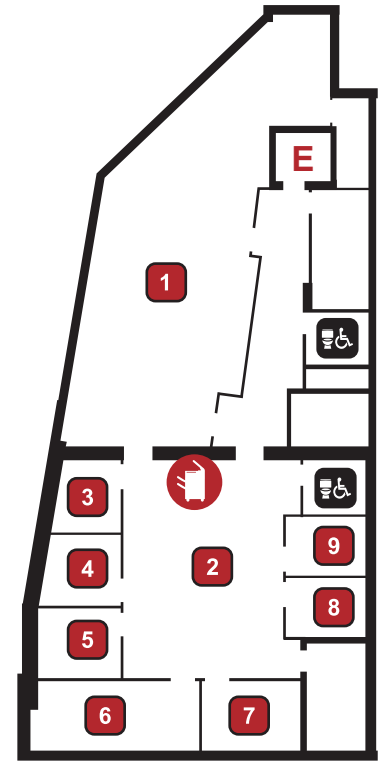
- B-201 Student Centre 
- B-202 Open Workstations 
- B-203 AUSU Office 
- B-204 Office 
- Men's Washroom 
- Women's Washroom 
- All Use Washroom 



Elevator **E** 

FLOOR 3

- B-301 SCEI Centre 
- B-302 Open Workstations 
- B-303 Office 
- B-304 Office 
- B-305 Office 
- B-306 Meeting Room* 
- B-307 Multi Faith & Prayer Room 
- B-308 Office 
- B-309 Office 
- All Use Washroom 
- All Use Washroom 

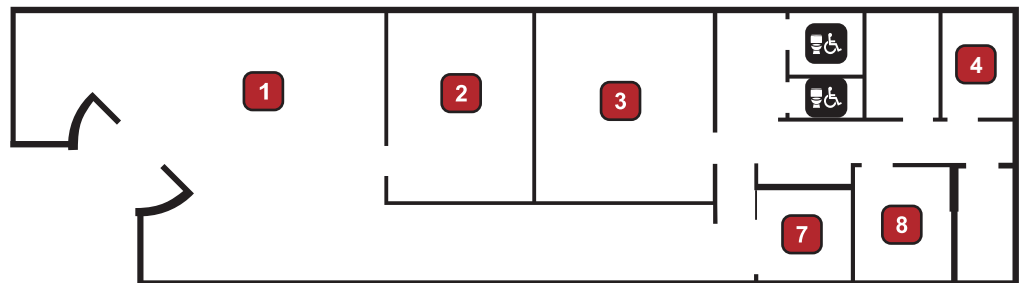


* Staff Access Only

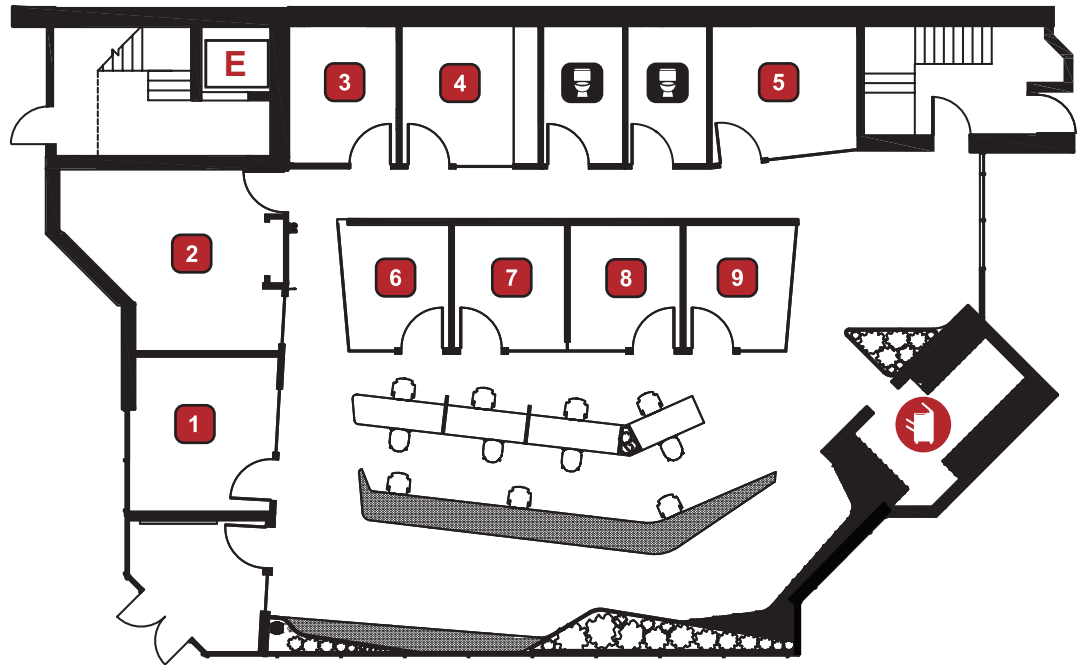
BUILDING C - 52 Queen Street East

FLOOR G

- C-101 Facility Hub 
- C-102 Office 
- C-104 Office 
- C-108 Office 
- C-103 Office 
- C-109 Office 
- All Use Washroom 
- All Use Washroom 



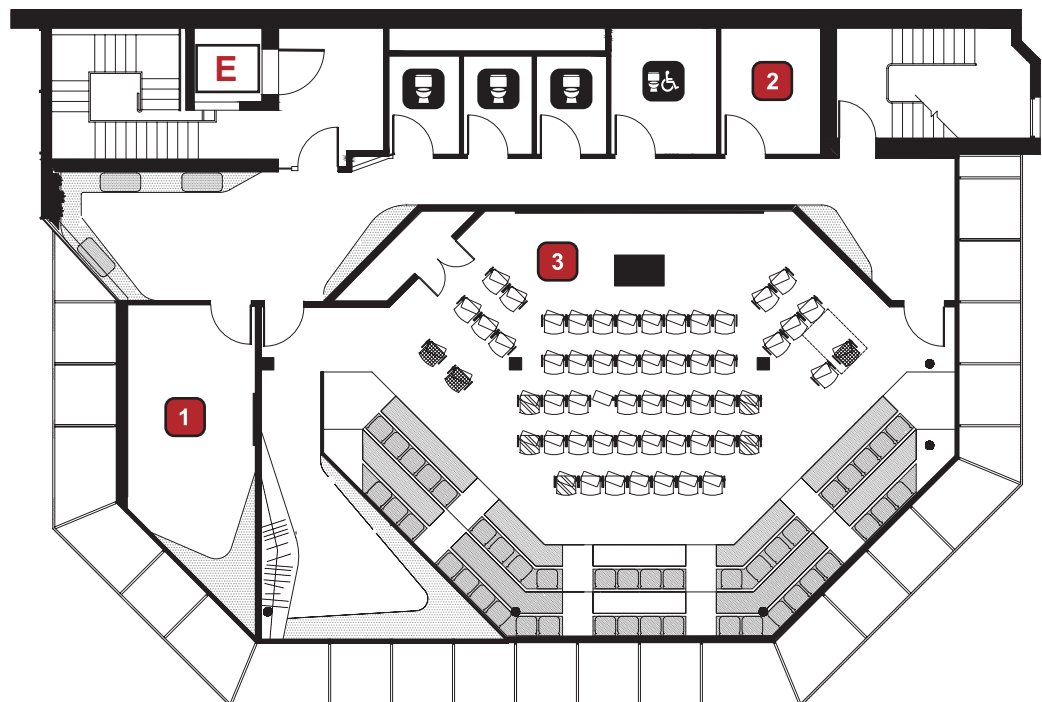
FLOOR 1



- D-101 Ceremony & Spiritual Room
- D-102 Office
- D-104 Staff Room
- D-107 Meeting Room
- D-108 Office
- D-109 Office
- D-110 Office
- D-111 Office
- All Use Washroom
- All Use Washroom

Elevator **E**

FLOOR 2

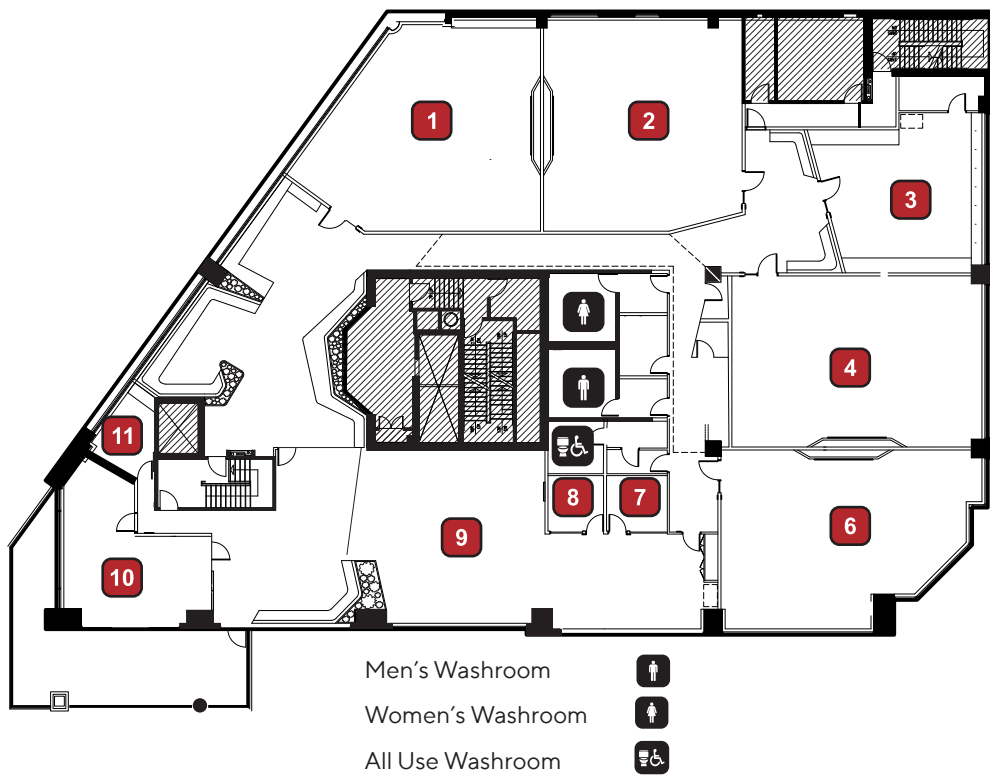


- D-201 Meeting Room
- D-207 Janitorial Closet
- D-208 Classroom
- All Use Washroom
- All Use Washroom

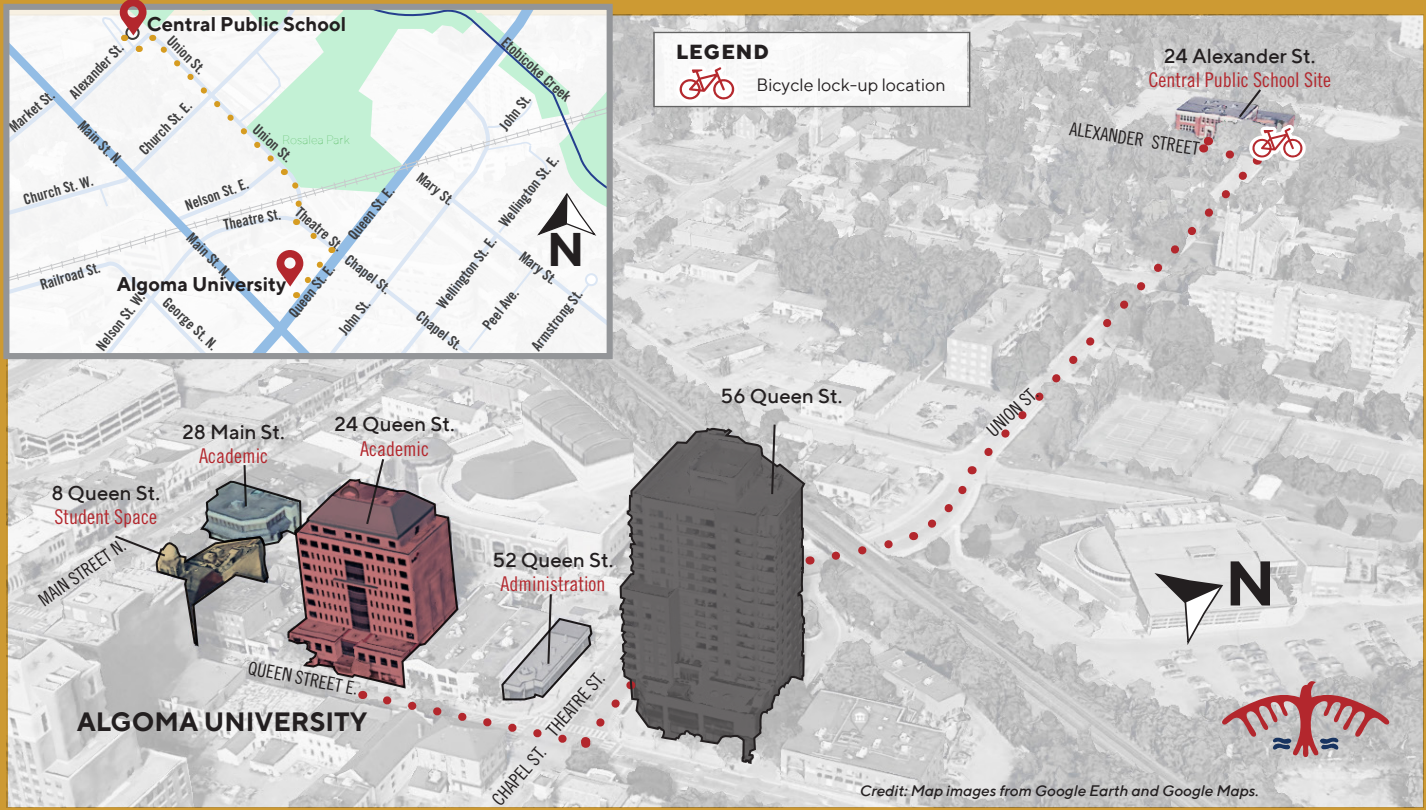
FLOOR 3

- E-301 - Classroom
- E-302 - Classroom
- E-304 - Computer Lab
- E-305 - Classroom
- E-308 - Classroom
- E-314 - Office
- E-314 - Office
- E-316 - Open Workstations
- E-317 - Kitchenette/ Workshop
- E-318 - Office

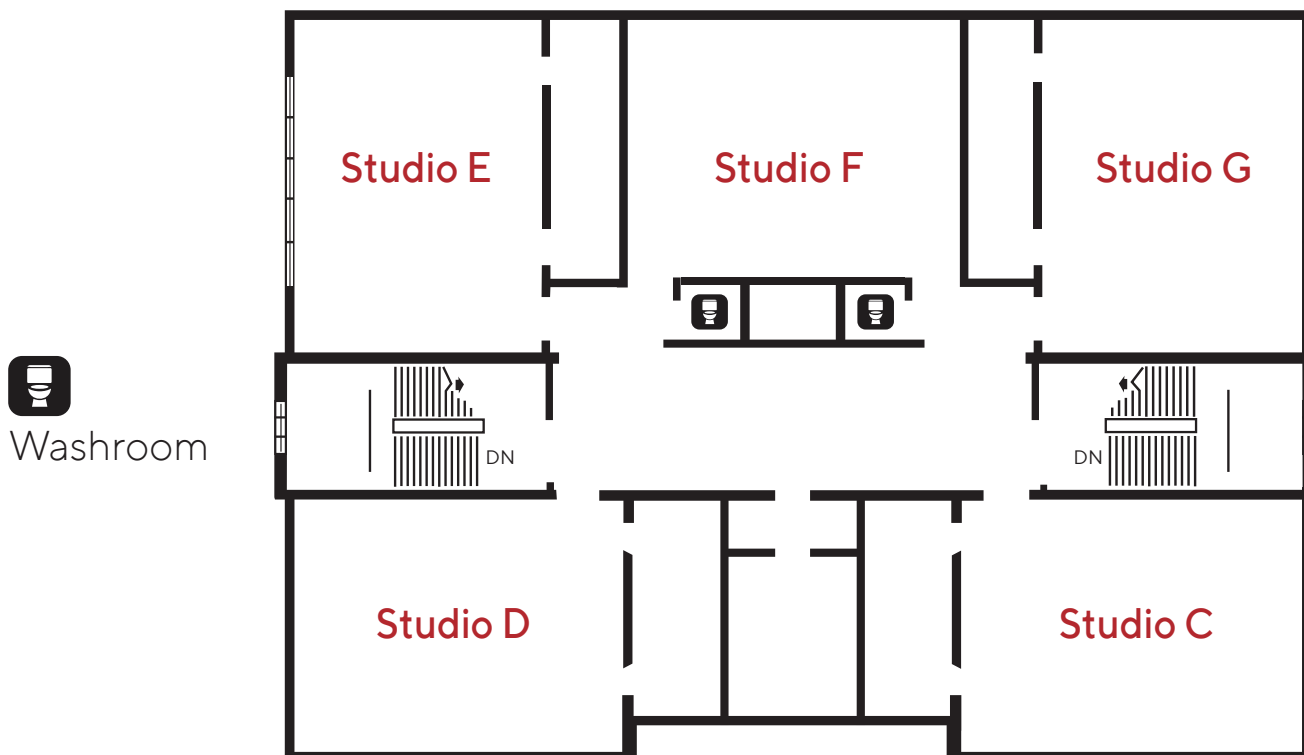
- 1
- 2
- 3
- 4
- 6
- 7
- 8
- 9
- 10
- 11



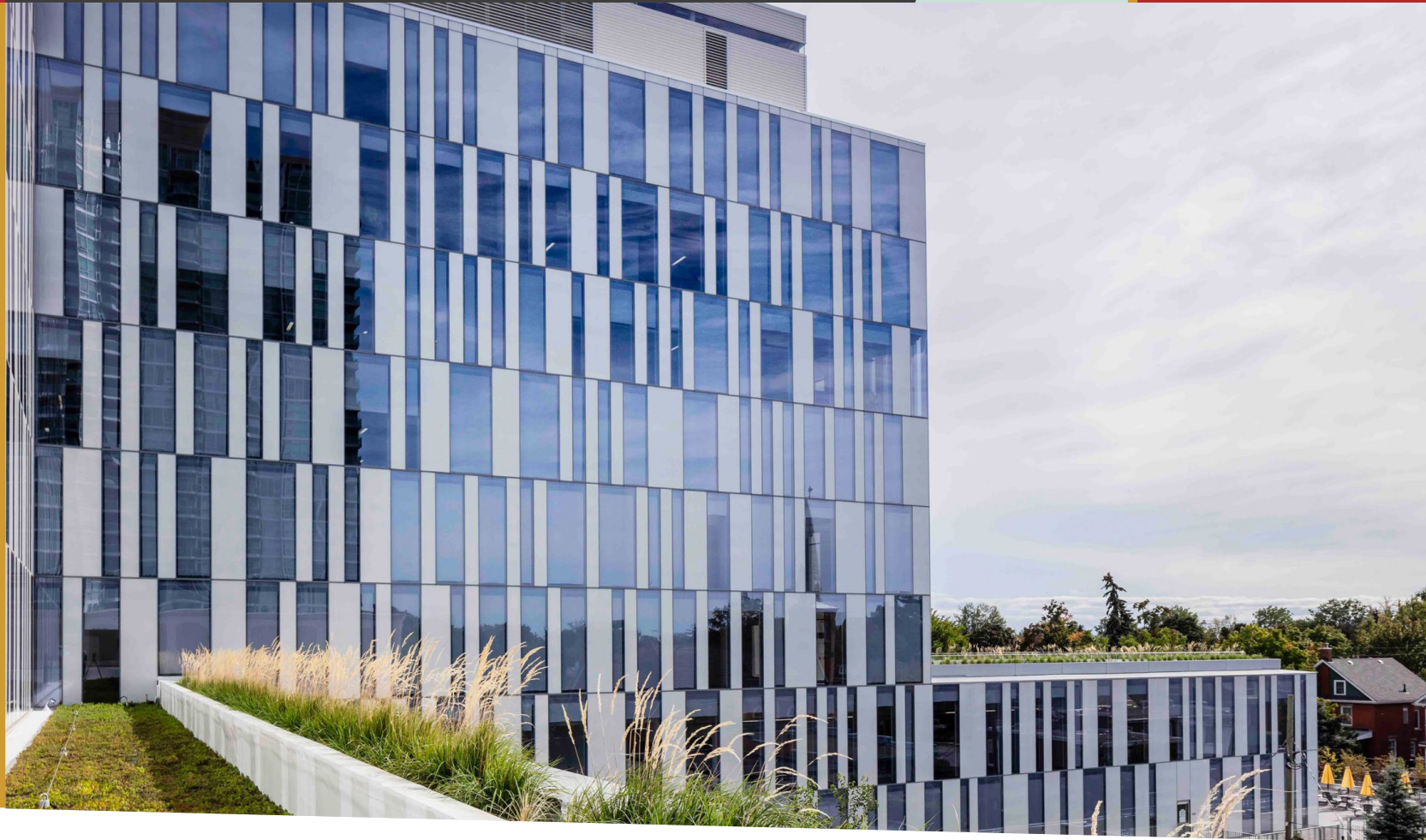
CENTRAL PUBLIC SCHOOL SITE • 24 ALEXANDER ST.



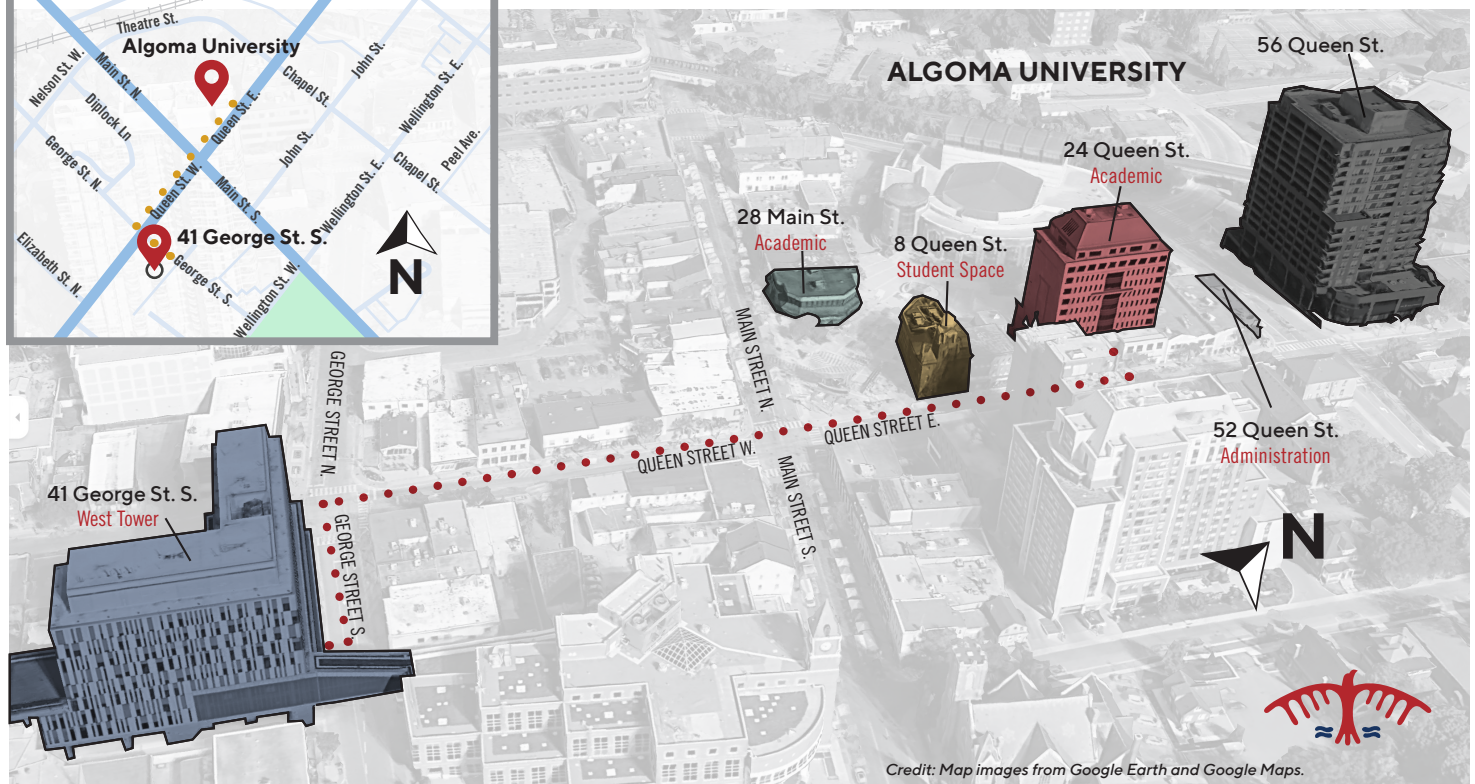
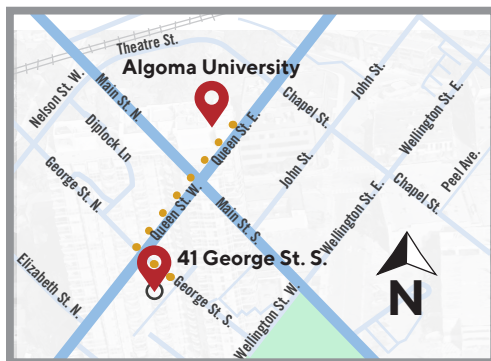
Brampton campus - Central Public School site 24 Alexander St, Brampton, ON L6V 1H6 2nd Floor



West Tower - 41 Georges St. S,



WEST TOWER • 41 GEORGES ST. S.



Credit: Map images from Google Earth and Google Maps.