

Graduate Certificate in **HUMAN RESOURCES MANAGEMENT**

ALL. BUSINESS.

The two semester (8-month) Graduate Certificate in Human Resources Management prepares students for a career as a Human Resources professional. It is suitable for students who already hold another degree/diploma but desire skills in the HR field to complement their work experience and previous education.

All courses taken as part of the Graduate Certificate in Human Resource Management may be applied toward a Bachelor of Business Administration degree should the student meet the entrance requirements. Students may complete the Graduate Certificate in Human Resources on either a full-time or part-time basis.

SEMESTER ONE - FALL/ WINTER/ SPRING

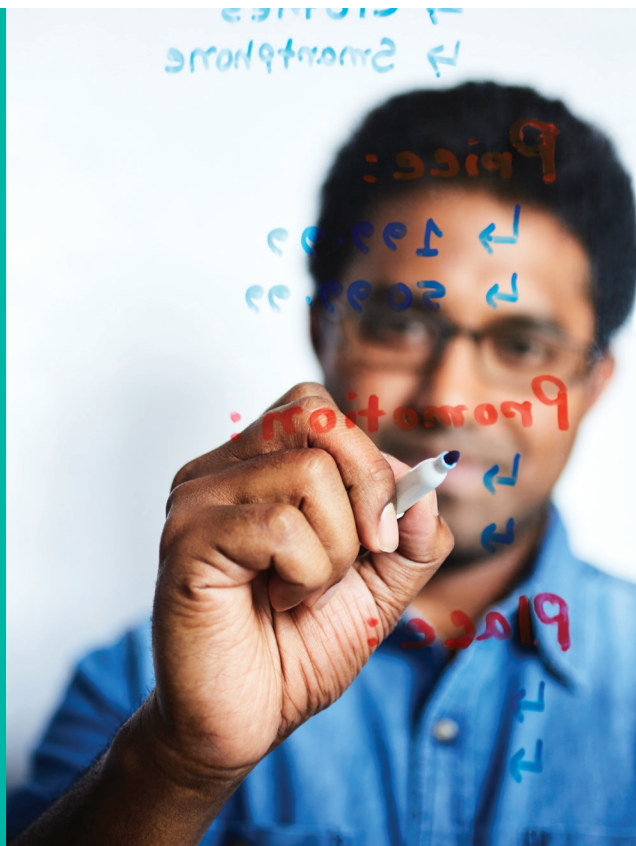
| | |
|-----------|---|
| ADMN 1206 | Management Skills and Secondary Research Methods |
| ADMN 2906 | Occupational Health and Safety Management |
| ADMN 2916 | Compensation |
| ADMN 3136 | Organizational Behaviour |
| ADMN 4976 | Industrial and Labour |

SEMESTER TWO - FALL/ WINTER/ SPRING

| | |
|-----------|---|
| ADMN 2556 | Finance and Accounting for Non-Business Majors |
| ADMN 2926 | Training and Development |
| ADMN 3137 | Management of Human Resources |
| ADMN 3206 | Human Resource Planning |
| ADMN 3216 | Recruitment and Selection |



If you have any questions
please email admissions@algomau.ca



CHRP/CHRL DESIGNATION:

Qualified students can pursue their CHRP and/or CHRL designation upon successful completion of HR courses. Students should refer to www.hrpa.ca for more information.

ADMISSION REQUIREMENTS:

Students who have previously completed an undergraduate degree/diploma with a 65% average or equivalent are eligible to enroll in this program.

Start classes in September, January, or May. There are **limited spots** available in the Human Resources Management certificate at our Brampton campus.



Students may apply for admission at algomau.ca/apply or email info@algomau.ca for further information.

Algoma
UNIVERSITY

**SCHOOL OF
BUSINESS &
ECONOMICS**

24 Queen Street East (Lower Level Suite 01)
Brampton, ON L6V 1A3

1520 Queen St. E.
Sault Ste. Marie, ON P6A 2G4

www.algomau.ca/SchoolBE